

# DENGUE ROUND THE CORNER

Know more, worry less

## Apprehend Dengue

Dengue is caused by 1 of the 4 serotypes of Dengue Virus and spread by daytime biting mosquitoes.

Symptoms include high-grade fever for 5-7 days with headache, intense body pain, red spots on skin and blood in vomitus.

Children are more prone to dengue with life-threatening complications.

## Warning signs of severe dengue (WHO, 2009)

Sudden change in body temperature from high to sub-normal

Lethargy, restlessness

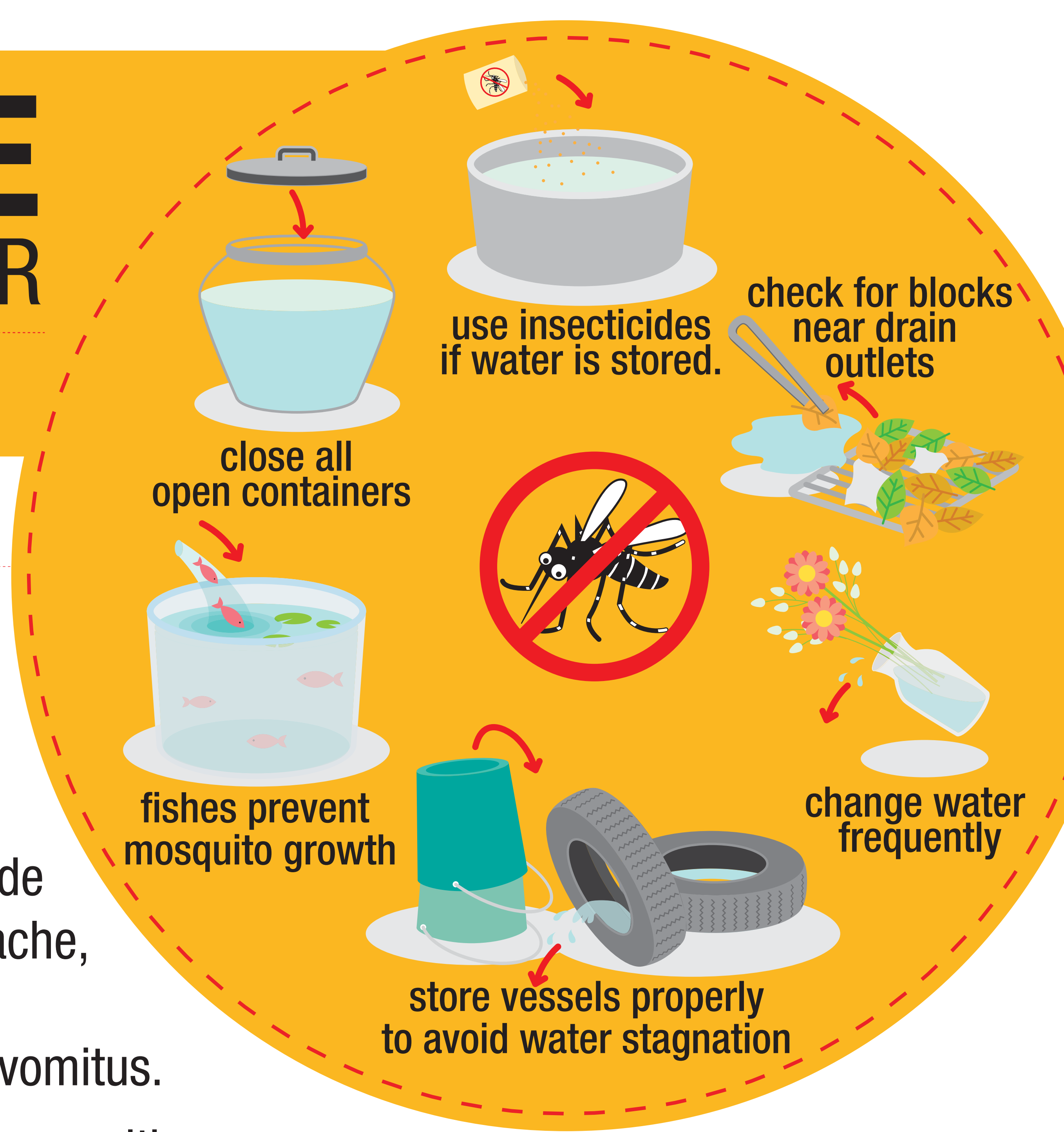
Decreased oral intake and decreased urine output

Severe abdominal pain

Persistent vomiting

Bleeding from mouth, blood in vomitus or stools

Laboratory parameters that indicate rapid loss of plasma and fall in platelets



## Dengue FAQs

Know more, worry less



### 1. What is Dengue?

Fever caused by one of the four serotypes of dengue virus.

Transmitted to humans by *Aedes Aegypti* mosquito, which feeds only during the day.

Not contagious; not transmitted from person to person; spreads only through bite of mosquitos

### 2. What are the warning signs to look for?

Risk is high especially in the first 1-2 days after fever subsides. Admit if you notice any of the following signs:

Sleepiness or restlessness ; refusing to accept oral fluids

Bleeding nose, gums and gastro-intestinal bleeding with fresh or old blood in the vomit or stool.

Severe abdominal pain; absence of urine in the last six hours; red spots on skin

Skin mottling, cold sweating and cold hands & feet.

Absence of urine in the last six hours; red spots on the skin.

### 3. How does one recognise Dengue?

Presents with sudden onset of fever, severe headache, muscle & joint pain, rash on body, severe eye pain - lasting for 3 - 10 days.

Critical Phase: 2- 4 days after the symptoms begin.

Vomiting, nausea, diarrhoea

### 4. How to be safe from mosquitos?

Close all open containers

Avoid storage of items like tyres outdoors to avoid water stagnation

Use insecticides if water is stored

*Consult your doctor immediately if you notice any of the warning signs.*

**HELPLINE: 044 - 6060 1066**

Issued in public interest by:

**Apollo Childrens Hospitals**

No. 15, Shafee Mohammed Road, Thousand Lights,  
Chennai - 600 006. Ph: 0091-44-2829 6300 / 8150 / 6262  
enquiryach\_cni@apollohospitals.com

